

# Stockard & Martin Halls

## BUILDING INFO

Stockard and Martin Halls house students on ten floors, with males and females housed separately. Community bathrooms are located on each floor. Large lounges, study spaces, a laundry facility, and a P.O.D. Market are located on the shared first floor. See pages 2-3 for floorplans.

## ROOM INFO

- Measurements for each room type are included on pages 4-9.
- One cable outlet and two internet outlets are available in each room. Basic cable, internet, and wi-fi services are included.
- Windows come with blinds. Decorative curtains can be placed on the outside of windows by using rods placed in large 3M Command Hooks.  
Window Sill Height ~ 32"    Top of Window to Floor ~ 95"
- Ceilings are approximately 9' on all floors.
- Floors are vinyl. Carpets are available through Residence Hall Carpets: ocm.com.
- Linens and towels are available through the Ole Miss Bookstore: olemissbookstore.com.

## FURNITURE INFO

- Furniture pictures and measurements are available on pages 10-11. All measurements are approximate.
- Each resident room includes two sets of furniture, one for each resident. A set of furniture includes a desk, desk chair, dresser, and twin extra-long bed with mattress.
- Furniture (except desk chair) is made of wood with a light finish.
- Student housing reserves the right to replace furniture as needed. Replacement pieces may vary.

For additional photos, visit our Facebook page.

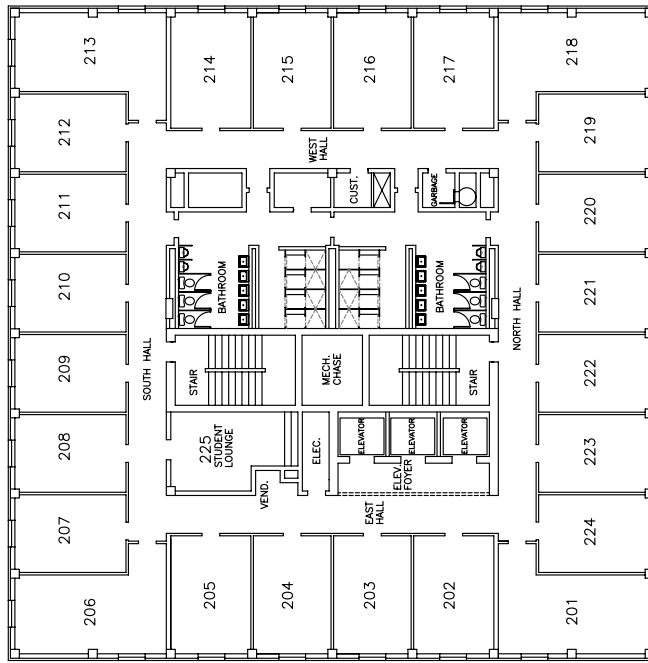


## VISIT US ONLINE

[studenthousing.olemiss.edu](http://studenthousing.olemiss.edu)

## QUESTIONS

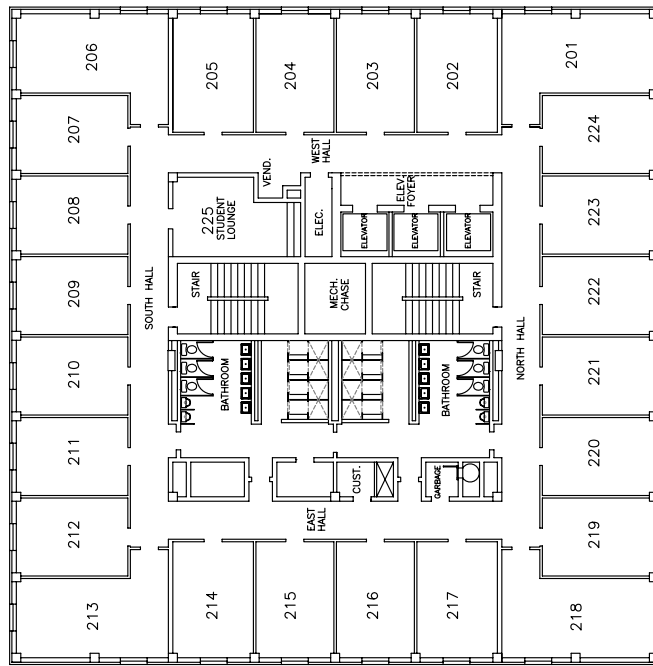
[housingma@olemiss.edu](mailto:housingma@olemiss.edu) or (662) 915-1091  
8:00am-5:00pm Monday-Friday



TYPICAL BEDROOM FLOOR  
2ND TO 11TH FLOOR  
S T O C K A R D T O W E R F L O O R P L A N



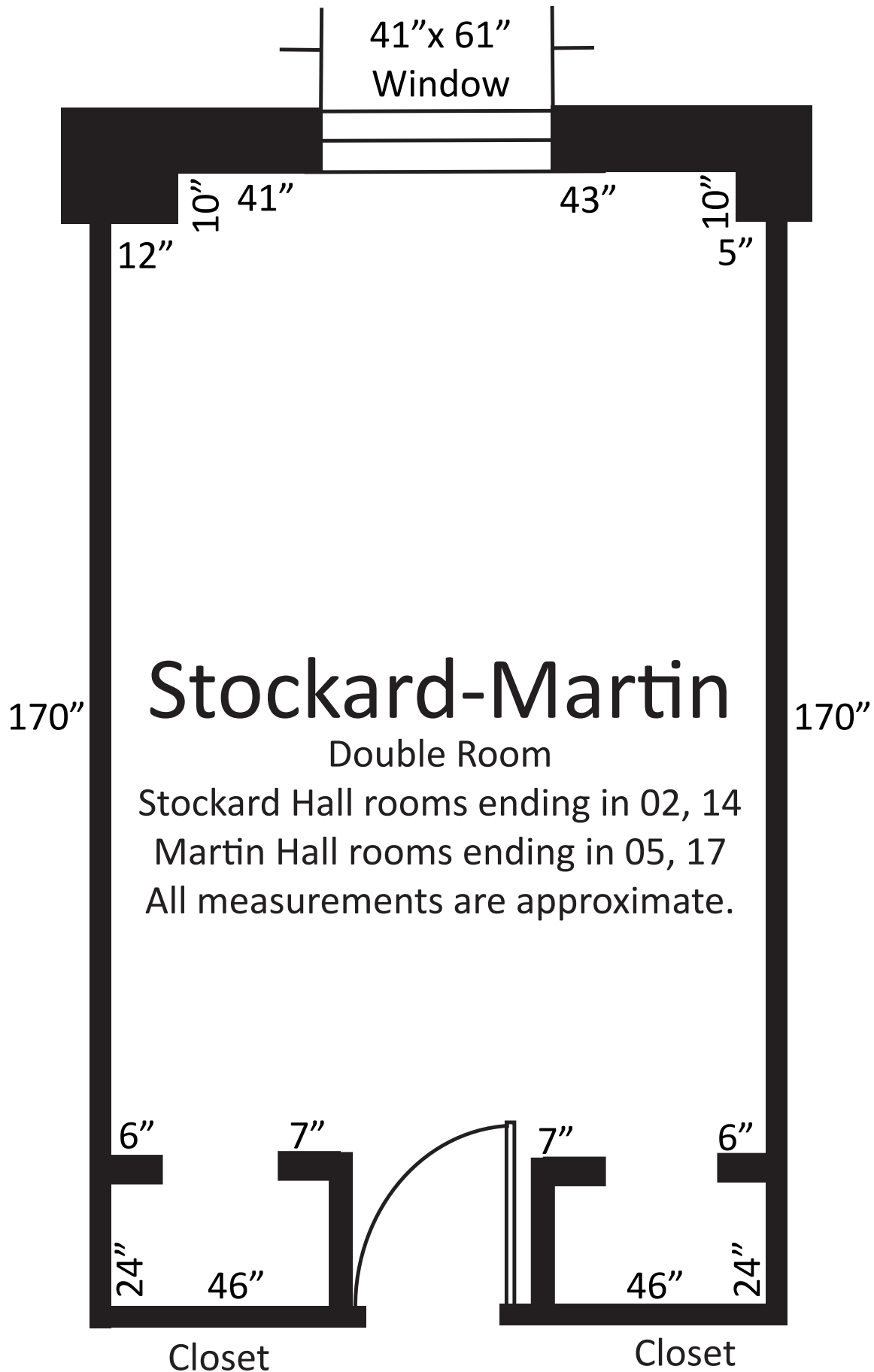
MARTIN/STOCKARD HALLS  
STUDENT HOUSING  
UNIVERSITY, MISSISSIPPI

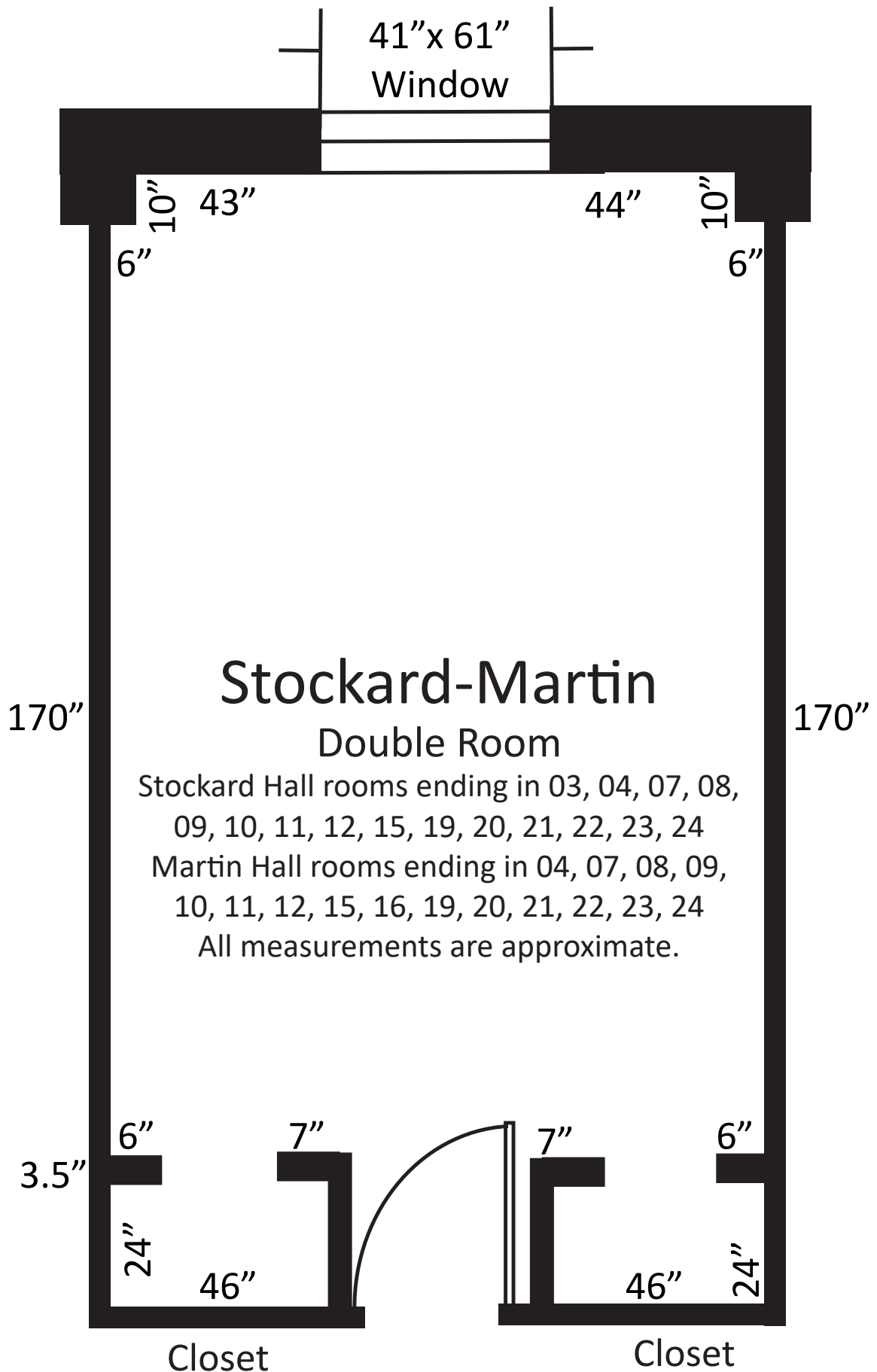


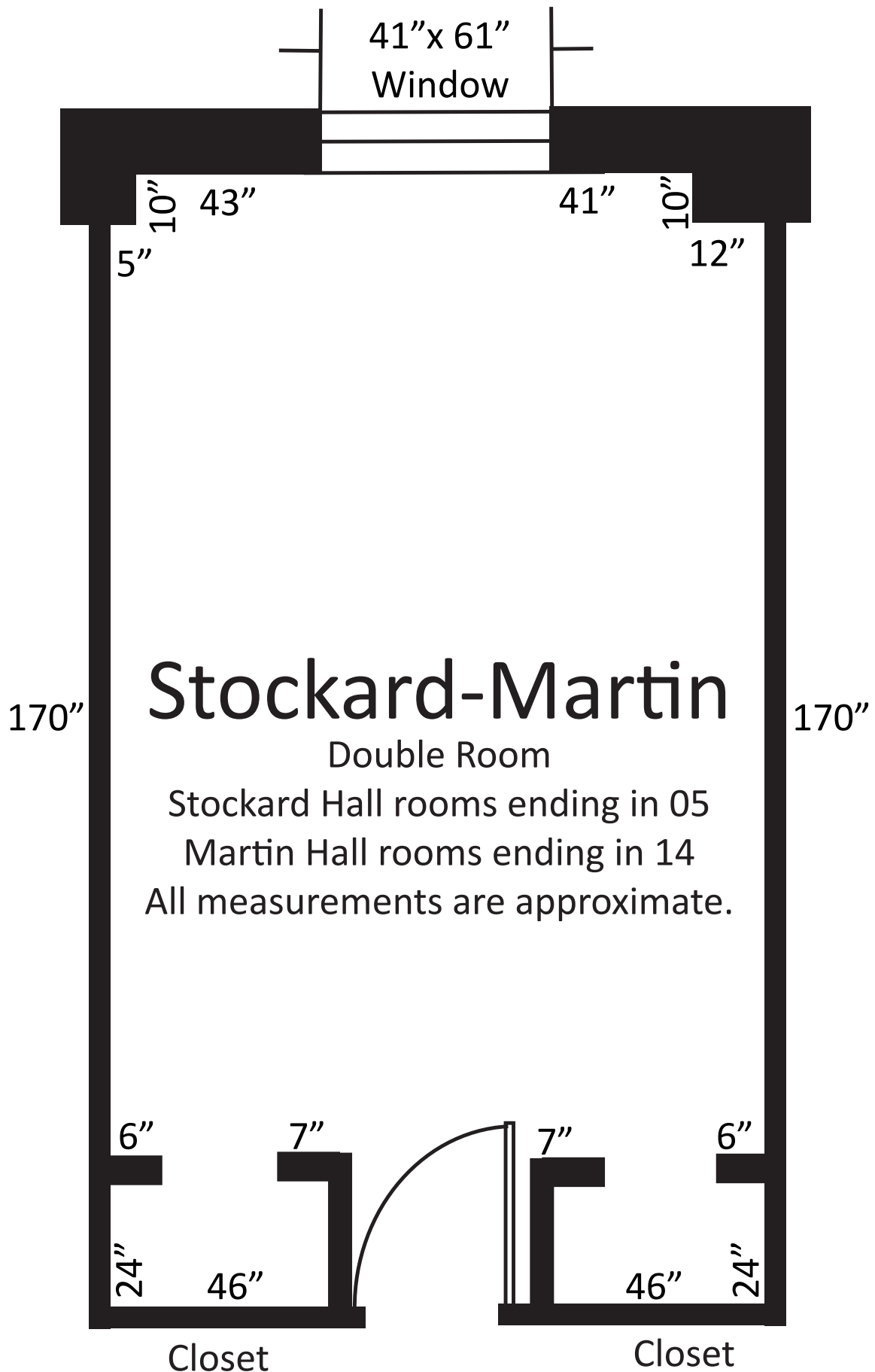
TYPICAL BEDROOM FLOOR  
2ND TO 11TH FLOOR

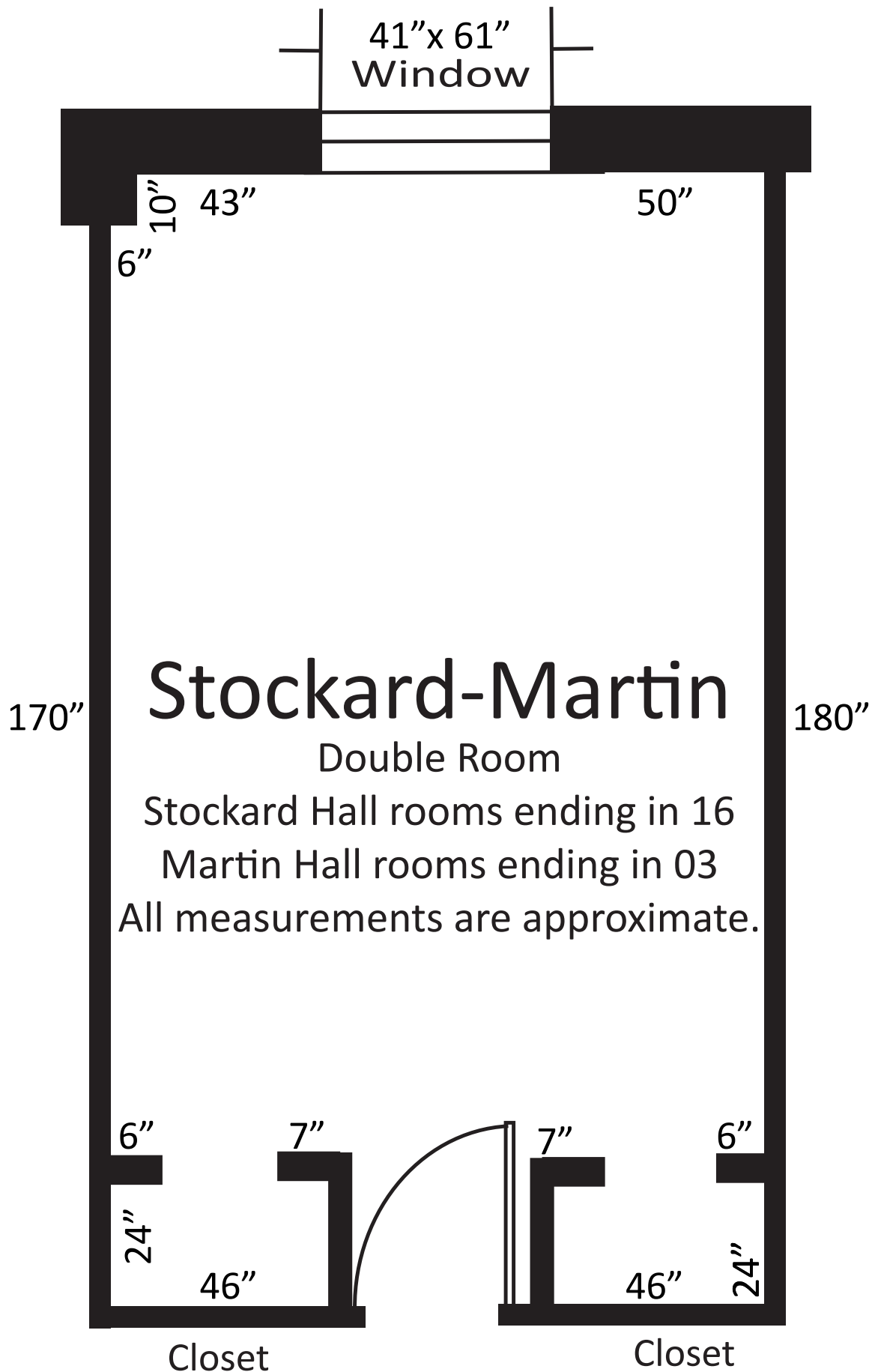
MARTIN TOWER FLOOR PLAN

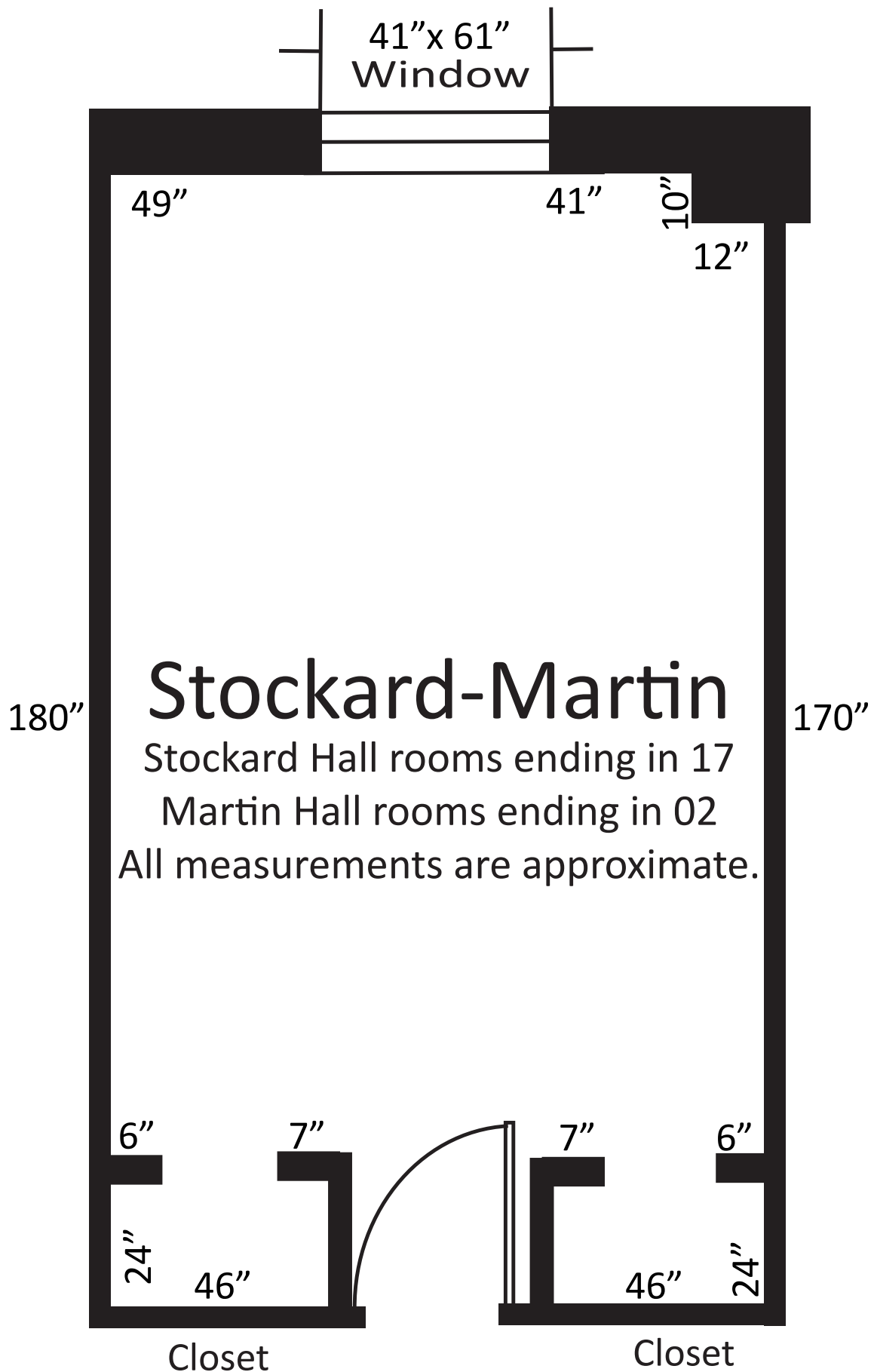
MARTIN/STOCKARD HALLS  
STUDENT HOUSING  
UNIVERSITY, MISSISSIPPI



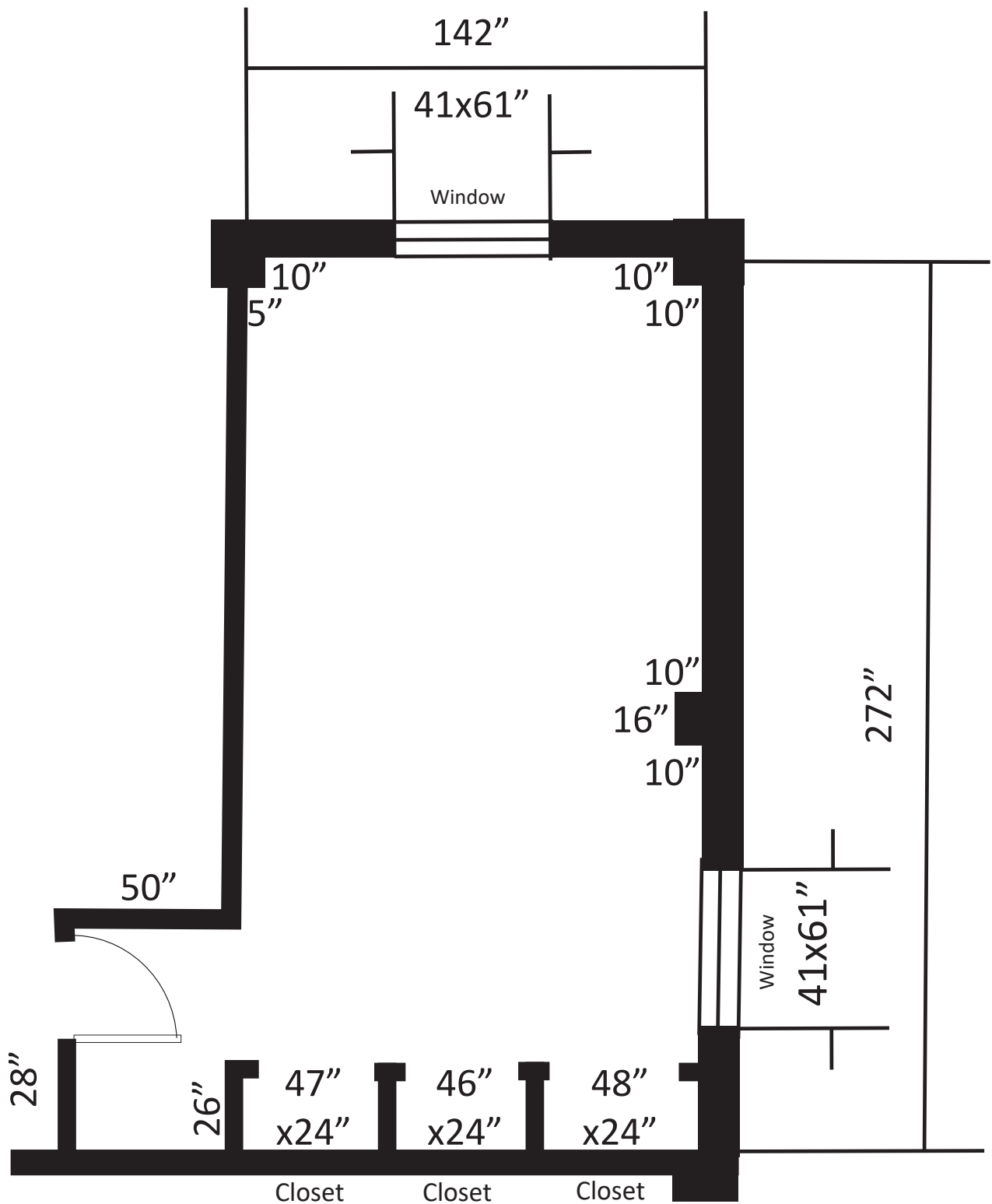












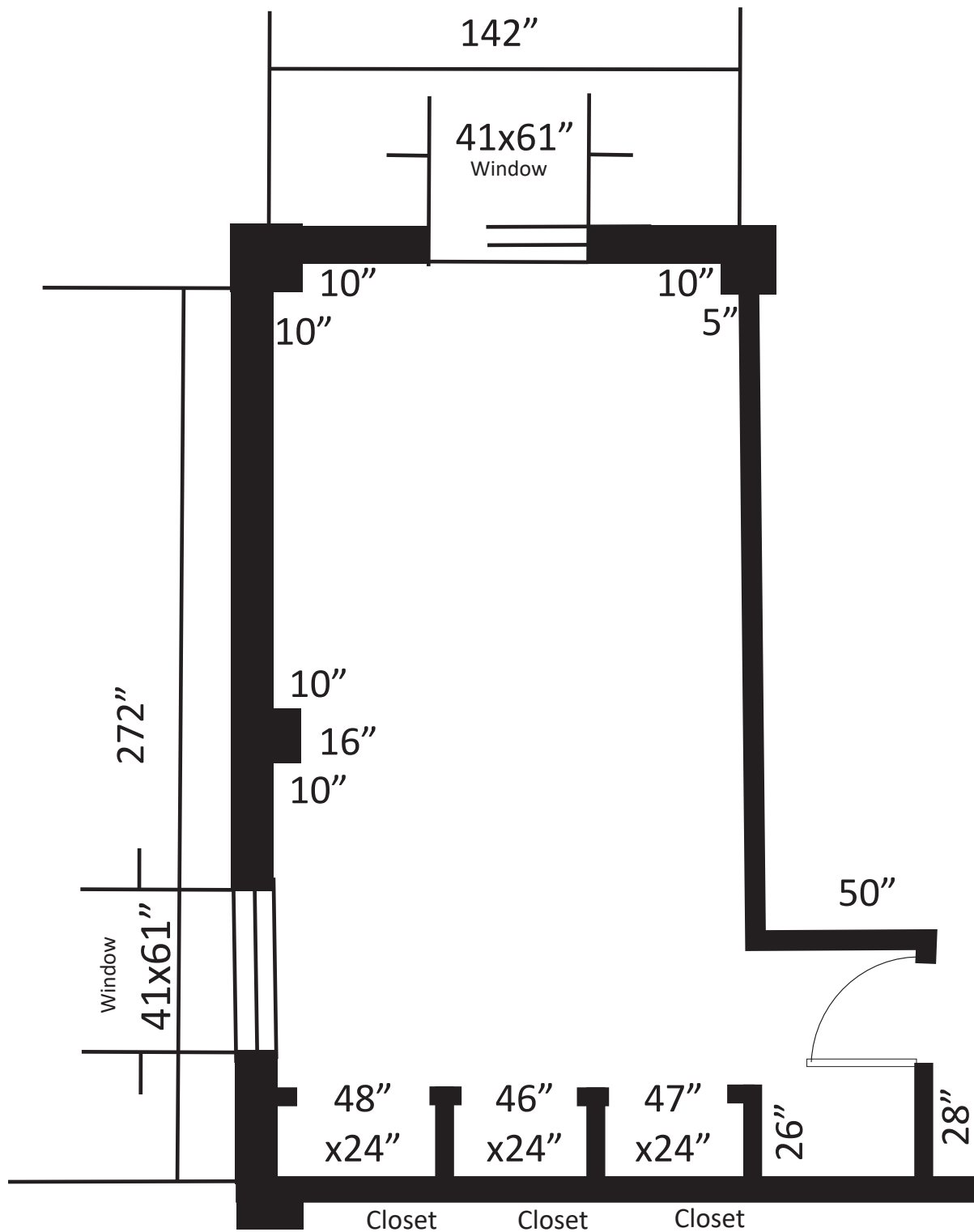
## Stockard-Martin

Large Double Room

Stockard Hall rooms ending in 01, 13

Martin Hall rooms ending in 06, 18

All measurements are approximate.



# Stockard-Martin

Large Double Room

Stockard Hall rooms ending in 06, 18

Martin Hall rooms ending in 01, 13

All measurements are approximate.



### **DRESSER**

Height ~ 30"   Width ~ 30"   Depth ~ 25"



### **DESK**

Height ~ 30"   Width ~ 40"   Depth ~ 25"



Closets do not have doors. Curtains with rings or tie tops can be used on the provided stationary rod to enclose. The rod is approximately 85" from the floor and 9" from the top of door opening.

Width of Closet Opening ~ 35"

Inside Ceiling Height ~ 110"

Clothing Rod Height ~ 48"



#### **BED (HEIGHT ADJUSTABLE)**

Headboard, Footboard, & Frame: Height ~ 40" Width ~ 40" Length ~ 85"

Mattress: Length ~ 80" Width ~ 35"

Beds can be raised to approximately 30" off the ground and can be lowered in 3" increments to approximately 3" off the ground. Beds will be raised to mid height for move in. Beds can be raised and lowered with a rubber mallet by the student. Rubber mallets are available for checkout at the front desk.



#### **BED (HEIGHT ADJUSTABLE, LOFT INCLUDED)**

Lofts, ladders, and safety rails can be rented from Lofts, LLC: [loftsinc.com](http://loftsinc.com).